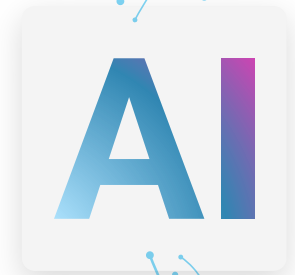


Providing Your AI with a TMS Brain

Create cross-system workflows and drive faster decisions without complex integrations. The Shipwell MCP Server connects your existing AI assistants directly to live transportation data, bridging the context gap and transforming your TMS into an active intelligence engine for your enterprise.



Core Capabilities



Direct Access to TMS Data

Expose shipments, carriers, contracts, invoices, and dock schedules through a single standardized interface. AI assistants query real-time data without custom API development.



Rapid AI Integration Architecture

Connect AI agents in minutes. MCP-native tools are automatically discoverable, allowing platforms to interact with Shipwell data without endpoint-by-endpoint configuration.



Multi-System AI Workflows

Combine Shipwell with ERP and WMS platforms using a single AI assistant. MCP enables workflows that span siloed platforms to reconcile costs and schedules simultaneously.



Full Multimodal Coverage

Access transportation data across all major freight modes, including FTL, LTL, parcel, drayage, intermodal, air, and ocean—bringing comprehensive logistics solutions from one simple integration.



Stateless Querying & Analysis

AI assistants retrieve, filter, and synthesize operational data instantly—supporting use cases like shipment visibility, freight audit, carrier selection, and performance analysis.

What Makes It Different



Built for AI, Not Just APIs

Traditional APIs are designed for systems, whereas the Shipwell MCP Server is designed for AI—giving AI assistants a structured, discoverable way to interact with transportation data without custom logic or middleware.



Composable by Design

Built to connect with other MCP servers and systems, providing seamless data and workflow orchestration.



Go-Live Faster

Launch new AI-powered functionality in days instead of months without the heavy engineering lift. The only limitation is your imagination.



Enterprise-Ready Security

Data access is tenant-scoped with server-side permission enforcement, ensuring secure interaction with sensitive supply chain information.



Ecosystem Flexibility

Compatible with leading AI frameworks and tools like Claude, GPT, Gemini, LangChain, CrewAI, and more, so you can build within your preferred ecosystem.



We didn't build MCP as another integration layer—we built it as the foundation for how AI interacts with logistics systems going forward. This is about giving partners a faster, more reliable way to build on top of real transportation data.

- Charles Dickerson, VP of Engineering, Shipwell

Balanced Benefits for the Logistics Ecosystem

For Customers

- Proactive Execution: Transition from reactive reporting to proactive, AI-driven execution by identifying risks and cost discrepancies instantly.
- Reduced Support Demands: Empower non-technical teams to ask complex questions in plain language, reducing the burden on IT.

For Technology Partners

- Novel Product Experiences: Integrate AI features like real-time shipment insights and automated freight audit without rebuilding backend logistics logic.
- Accelerated Market Entry: Build AI-powered logistics applications in days, significantly reducing the engineering overhead of traditional integrations.

Use Cases



Self-Service Logistics Access

Resolve everyday shipment questions with access to live data across any department.



Dock Congestion Mitigation

Predict warehouse bottlenecks by correlating dock schedules with WMS labor data.



Finance Automation

Streamline freight cost analysis & invoice reconciliation within finance platforms.

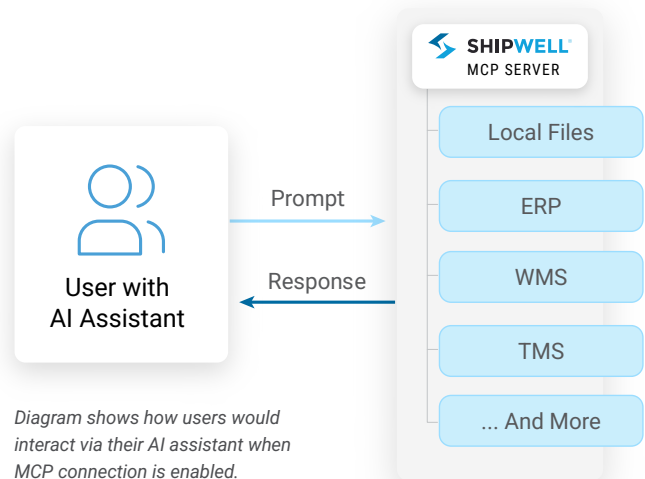
Getting Started

Build AI-powered logistics workflows on top of Shipwell, faster than ever before.

- Request sandbox access
- Connect your MCP-enabled agent
- Start building immediately

Ready to give your AI a TMS brain? If you're a current Shipwell customer, reach out to your Customer Success Manager to learn more.

If you're a partner interested in building with Shipwell MCP, connect with our sales team to explore access and integration.



About Shipwell

At Shipwell, we empower supply chains with increased efficiency and service effectiveness at scale. Our solution combines everything shippers need, from transportation management and visibility to procurement, in a comprehensive, easy-to-use platform, so shippers can effectively operate, manage, and optimize their entire shipping process seamlessly. To learn more, visit www.shipwell.com.

Contact Sales